

The Village Farm Barn

Approximate Gross Internal Area

Hazelnut Barn = 154.2 sq m / 1660 sq ft

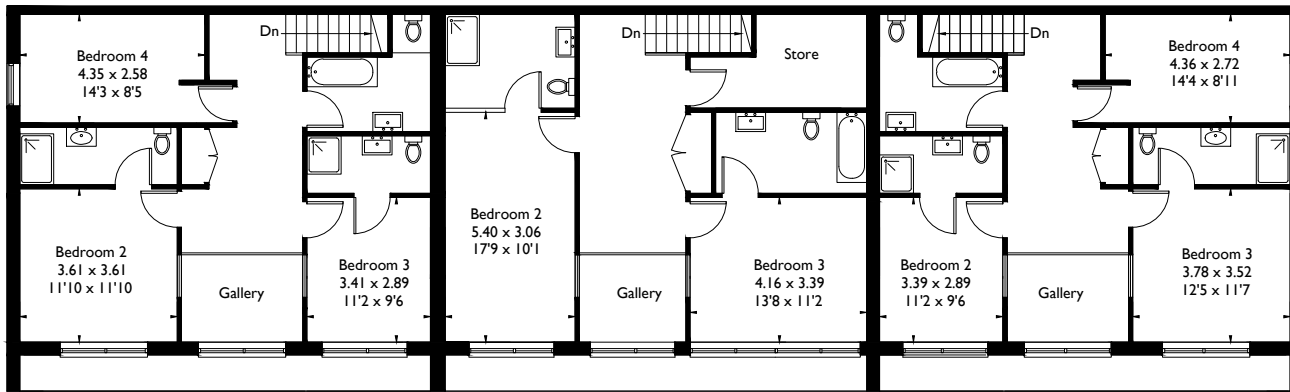
Chestnut Barn = 126.7 sq m / 1364 sq ft

Cobnut Barn = 154.2 sq m / 1660 sq ft

Walnut Barn = 173.7 sq m / 1870 sq ft

Games Room / Office = 87.9 sq m / 946 sq ft

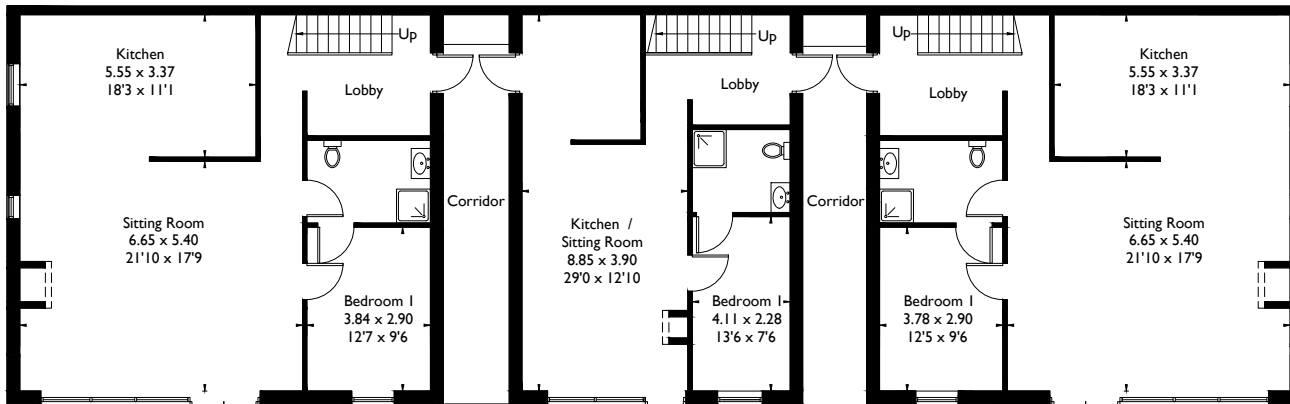
Total = 696.6 sq m / 7499 sq ft



Hazelnut Barn - First Floor

Chestnut Barn - First Floor

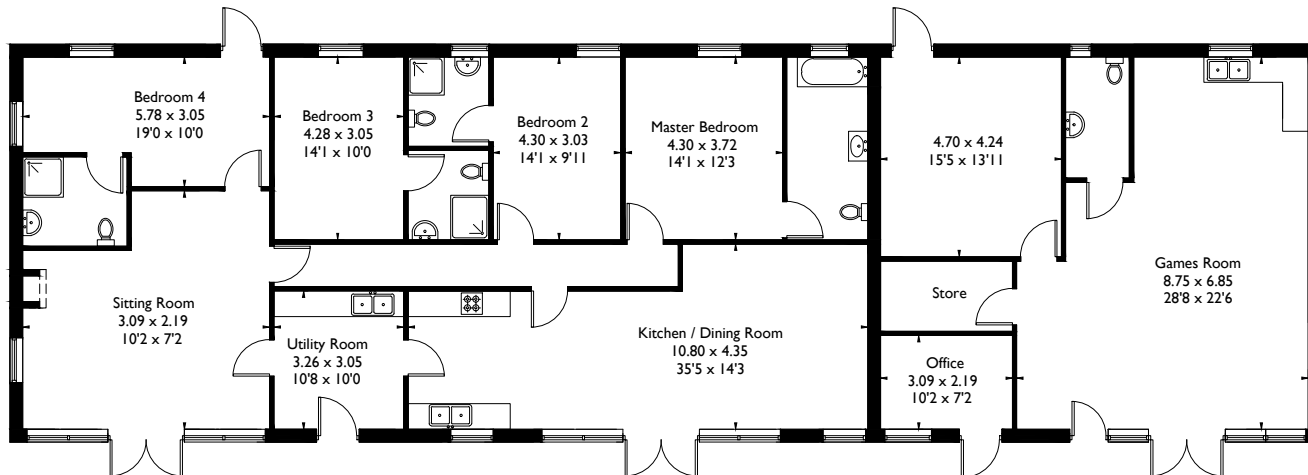
Cobnut Barn - First Floor



Hazelnut Barn - Ground Floor

Chestnut Barn - Ground Floor

Cobnut Barn - Ground Floor



Walnut Barn

Games Room / Office

Job Ref: 182791

Illustration for identification purposes only. The plan has been created using previous drawings as reference material, therefore the accuracy of information cannot be guaranteed. Not To Scale.